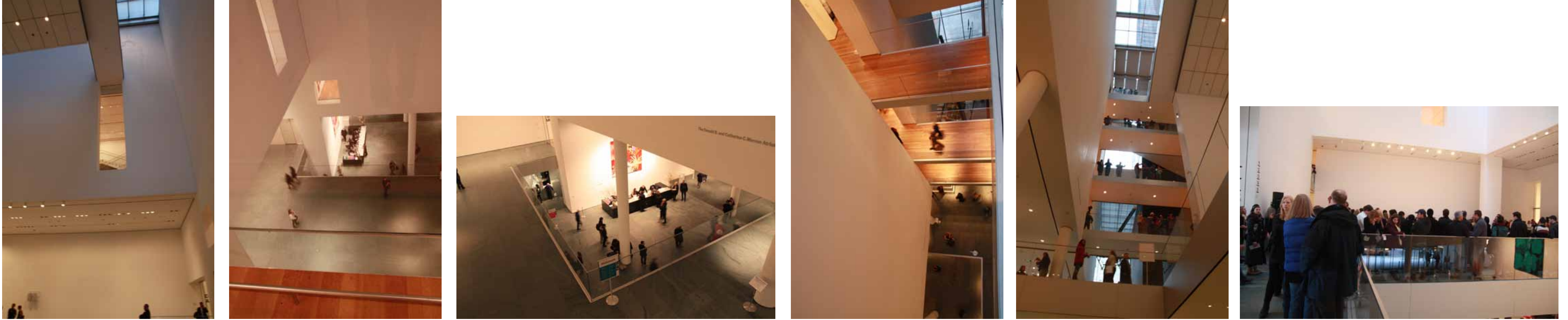


Museum Perception

New Museum: Interesting Insertion



MOMA: Play with the view



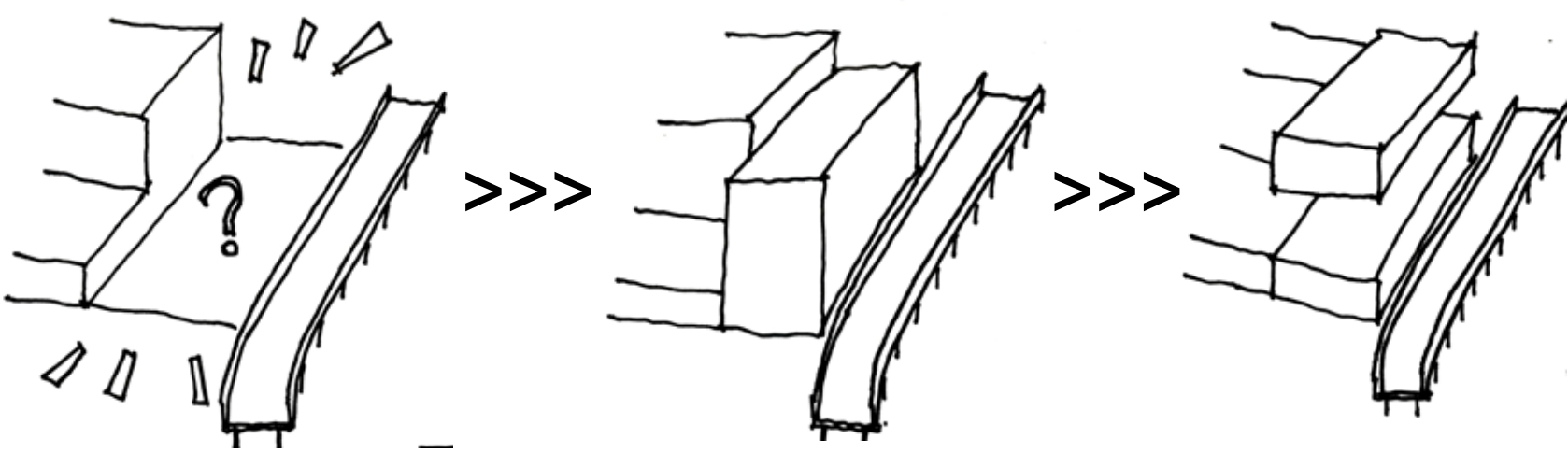
Site Perception

The Relationship between Highline and the surrounding building

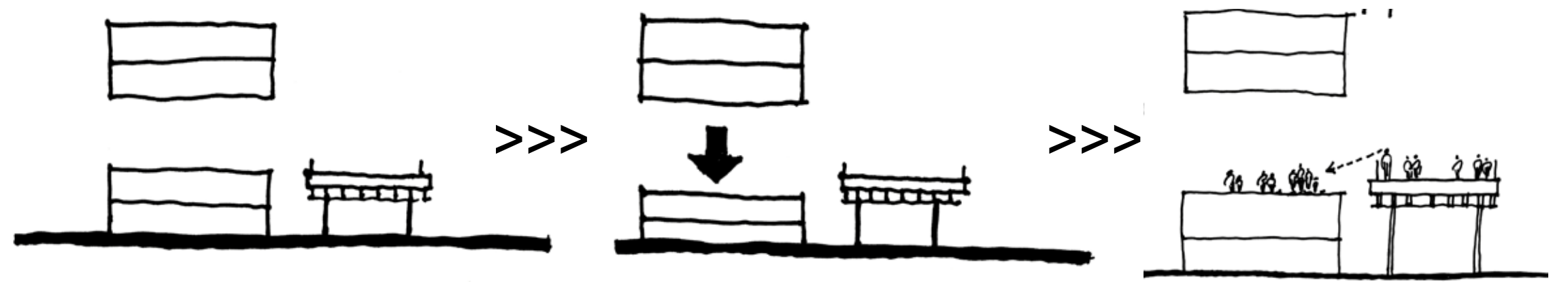


Concept

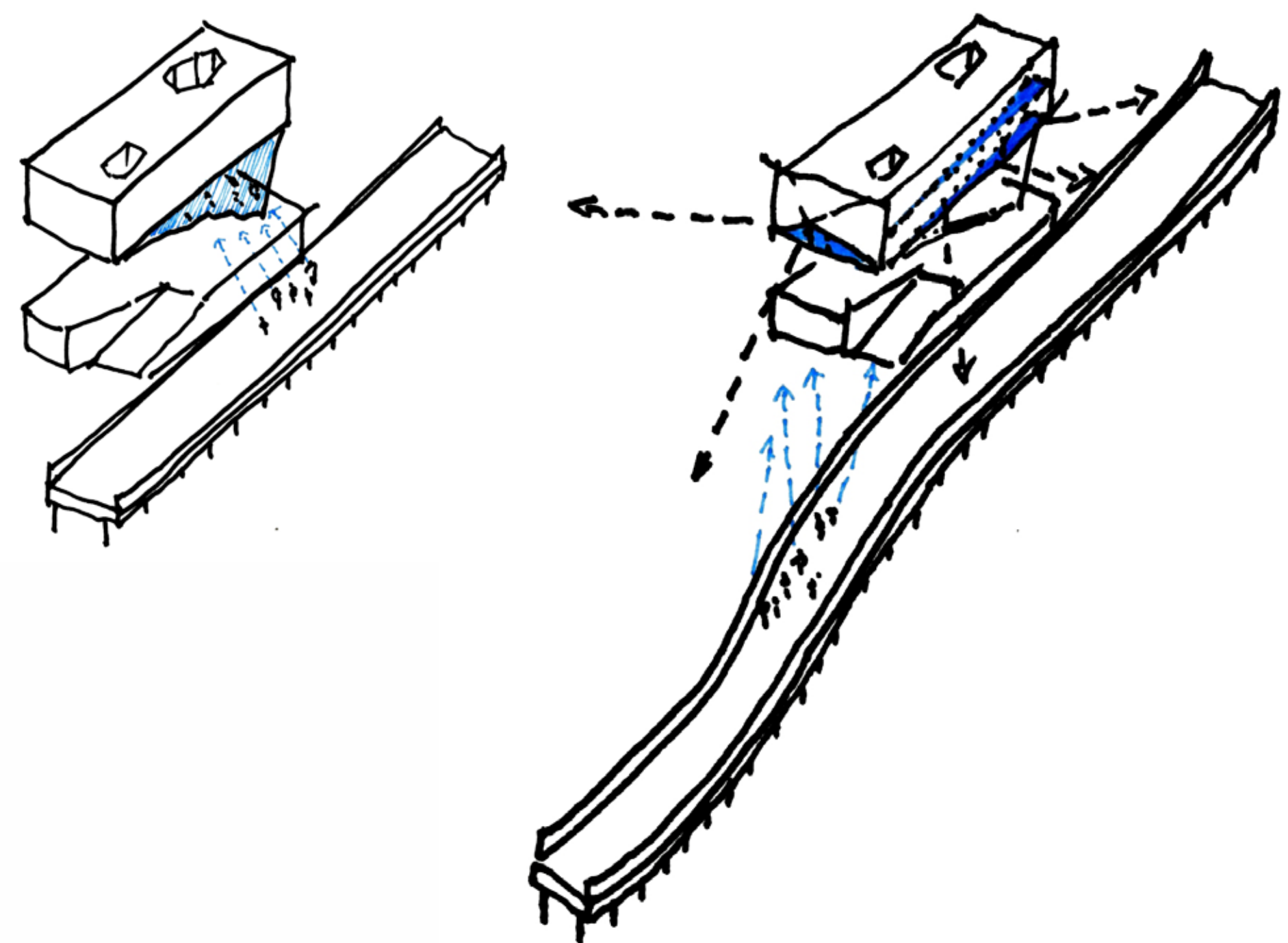
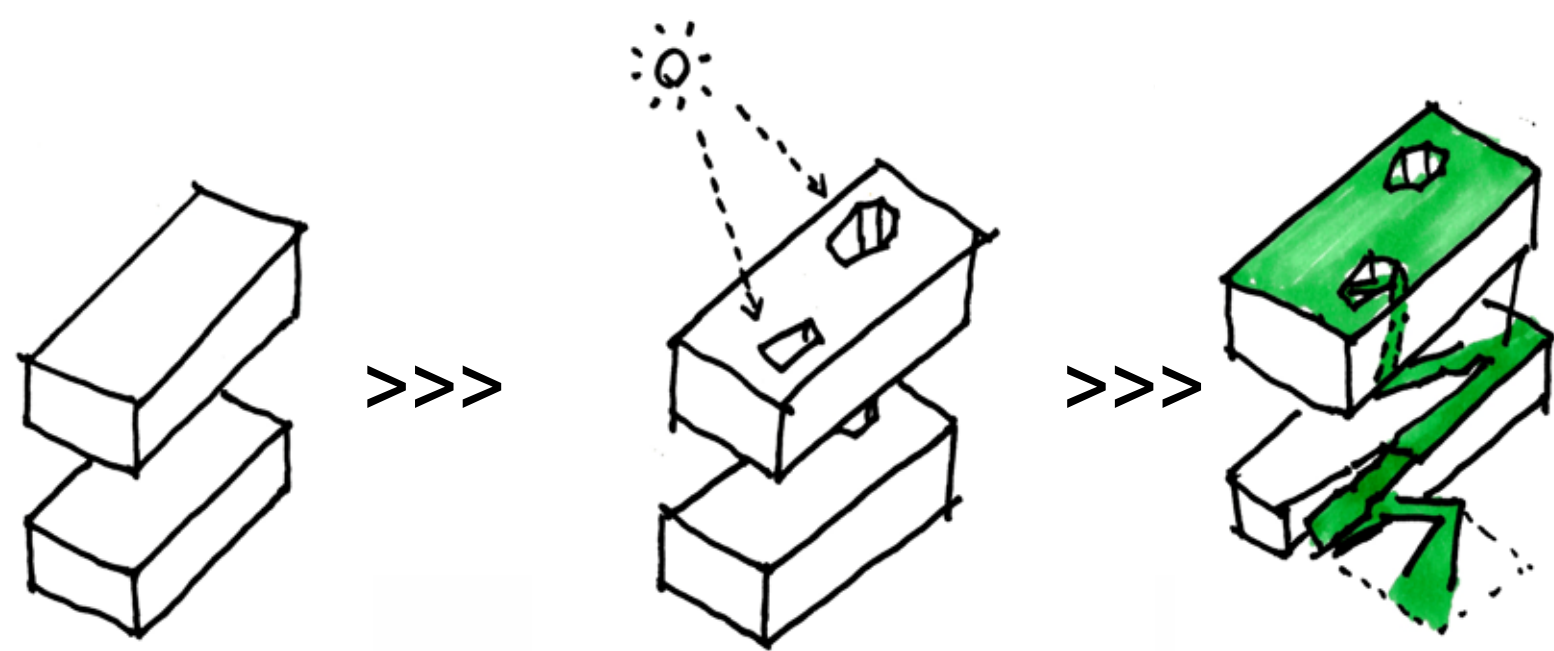
Kunsthall as an open space



Kunsthall as a platform



The city and yourself are part of the exhibits



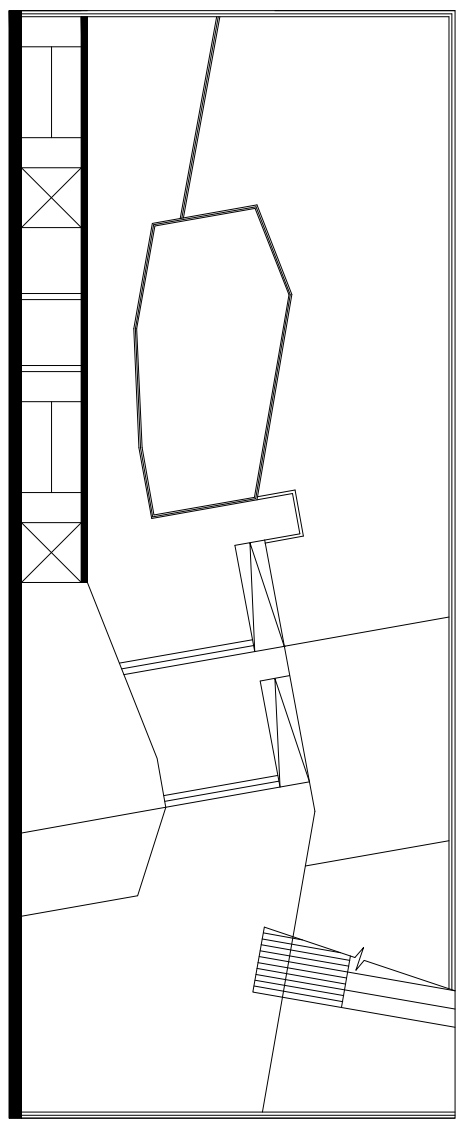
Kunsthall of Transparency

ARCH 842, Graduate Core Studio II

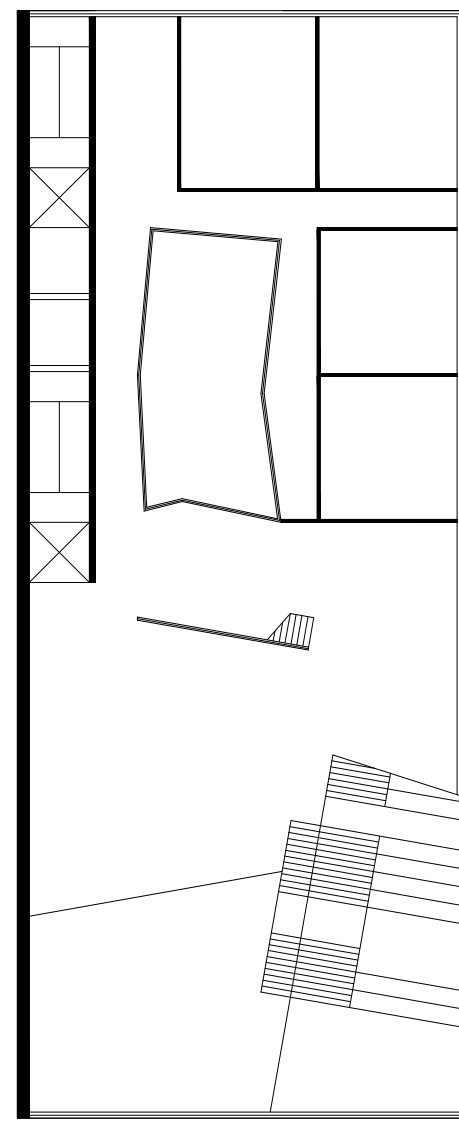
Analogies of Placemaking in the Analogue City: Digital Ecologies + Digital Tectonics
Project 1: 'Kunsthall' in Chelsea/Meatpacking District - High Line, New York City

Student: Ke Huang

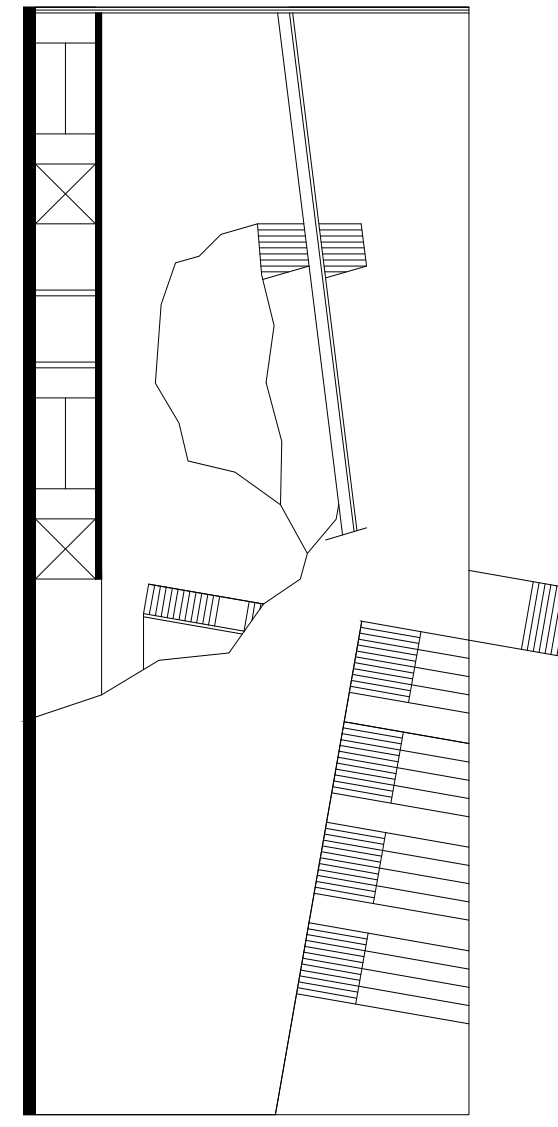
Instructor: Armando Montilla



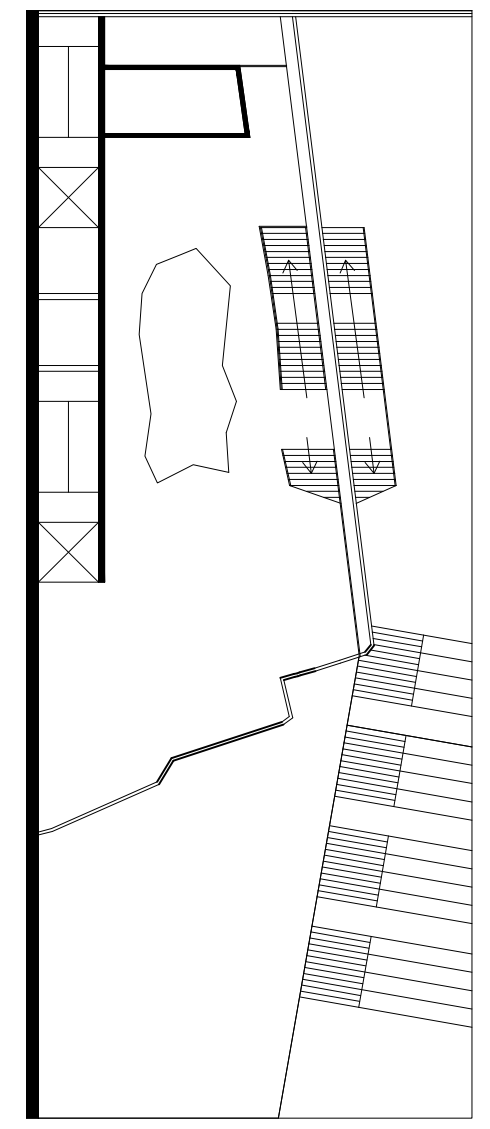
Ground Floor Plan



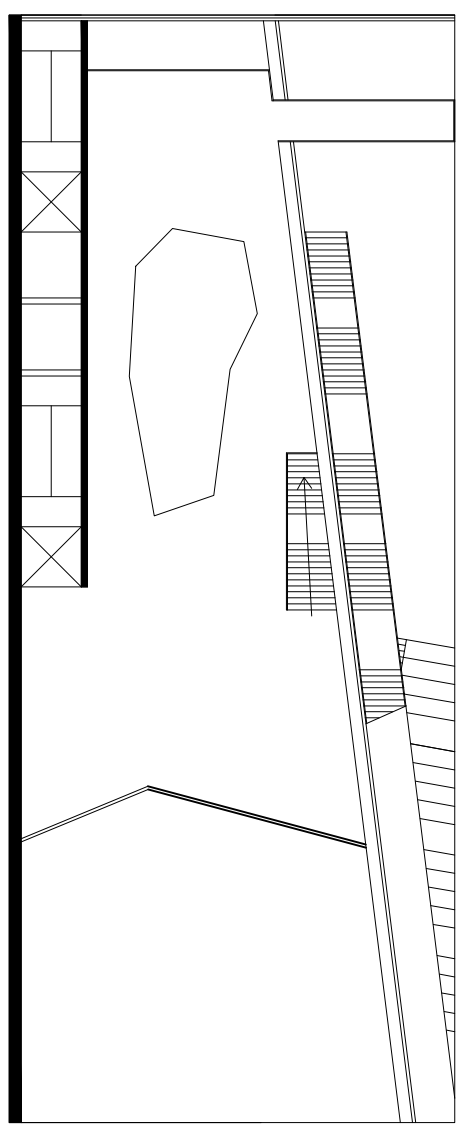
Second Floor Plan



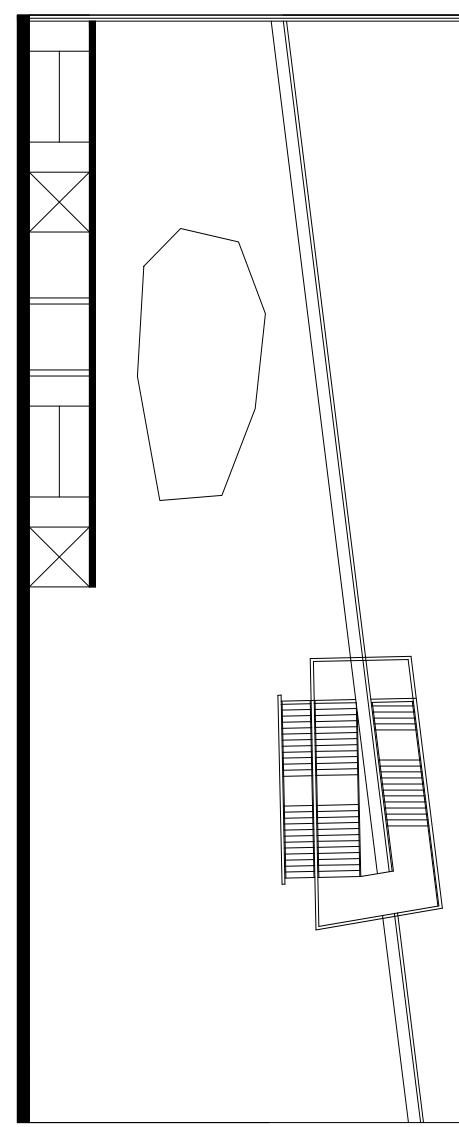
Third Floor Plan



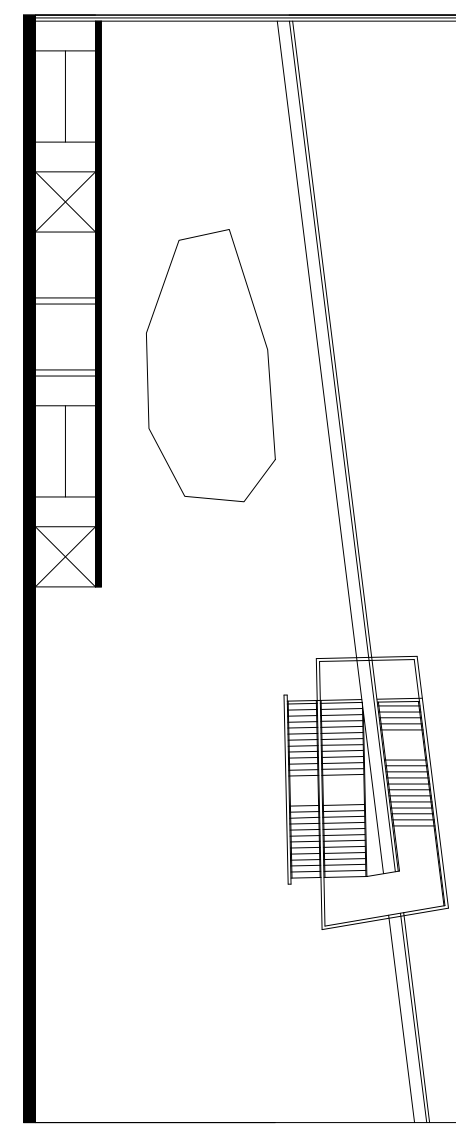
Fourth Floor Plan



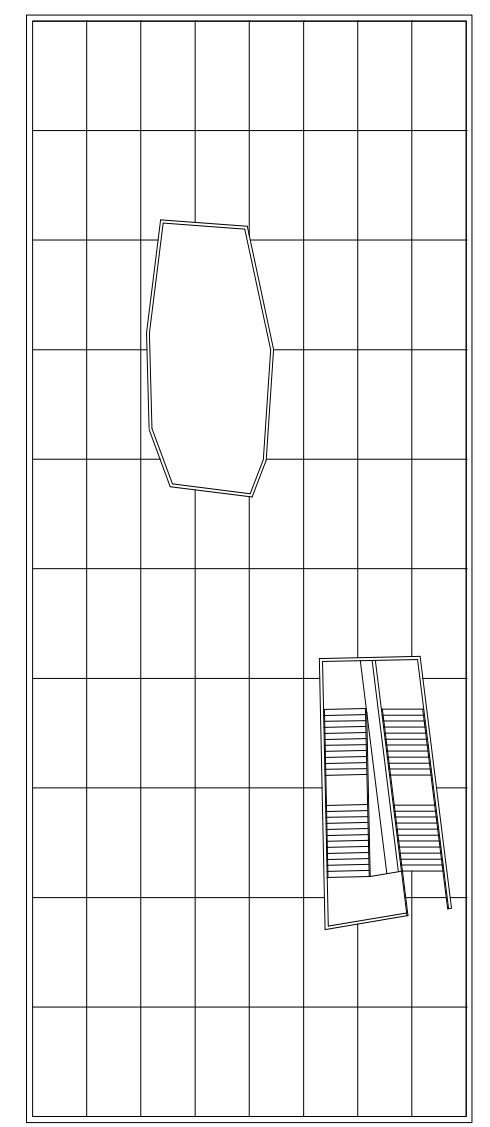
Fifth Floor Plan



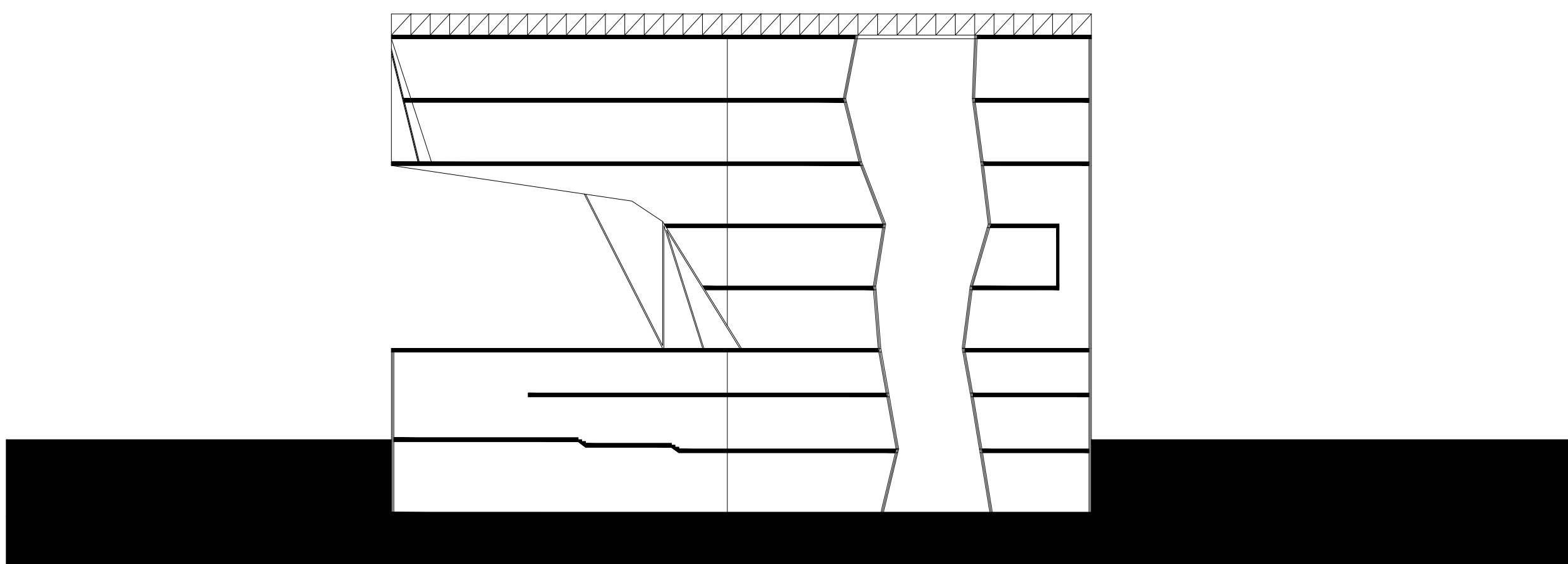
Sixth Floor Plan



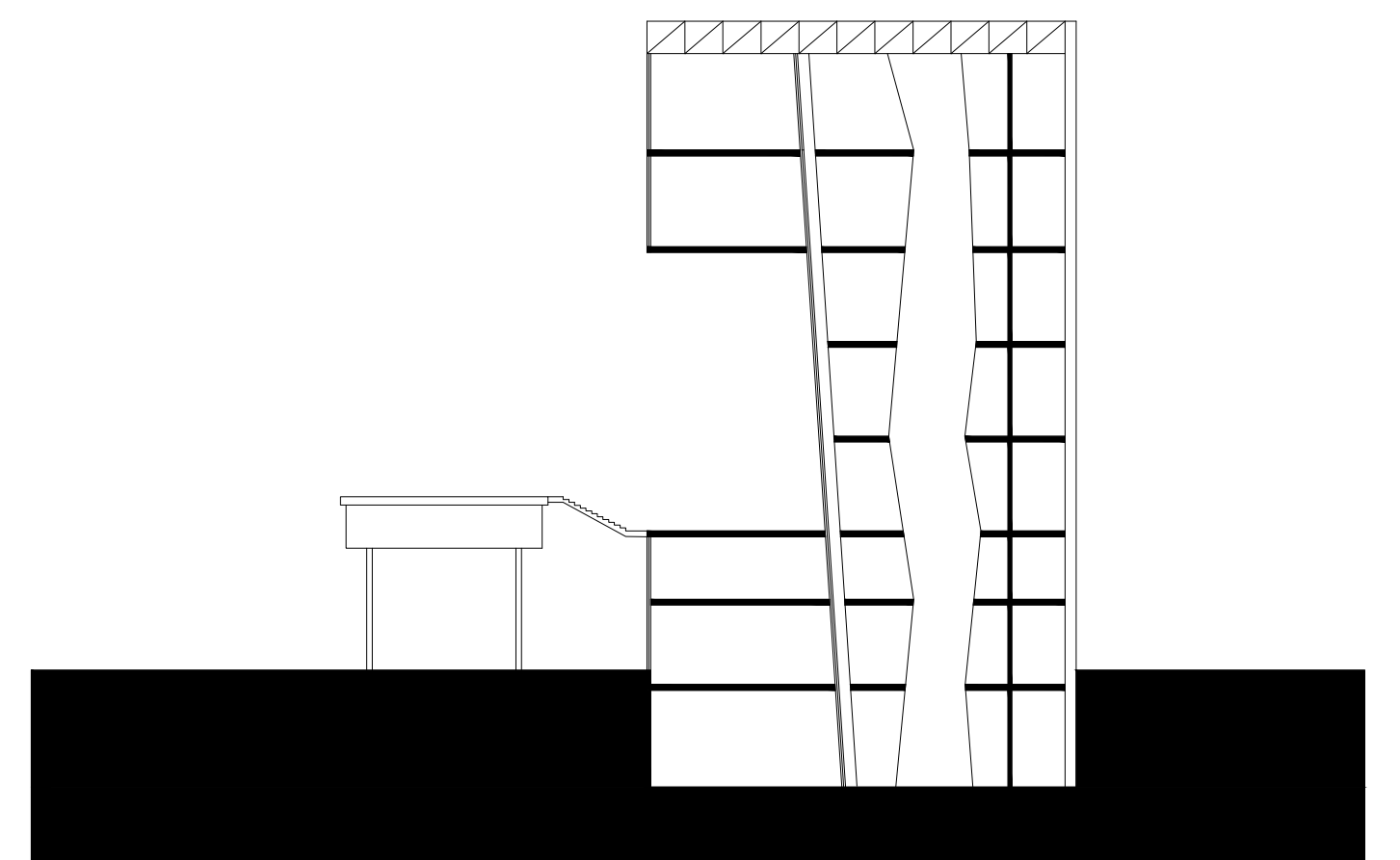
Seventh Floor Plan



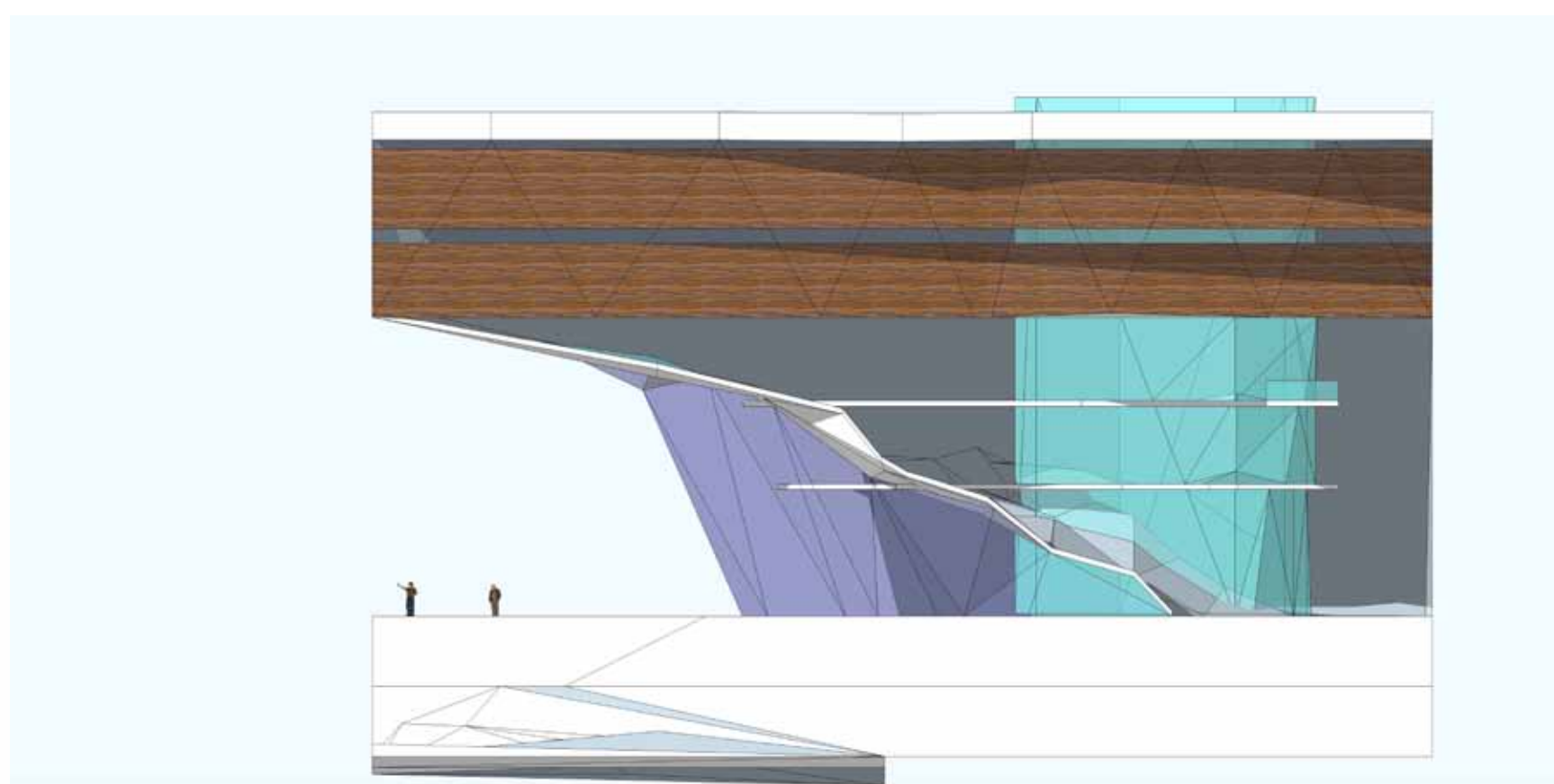
Roof Plan



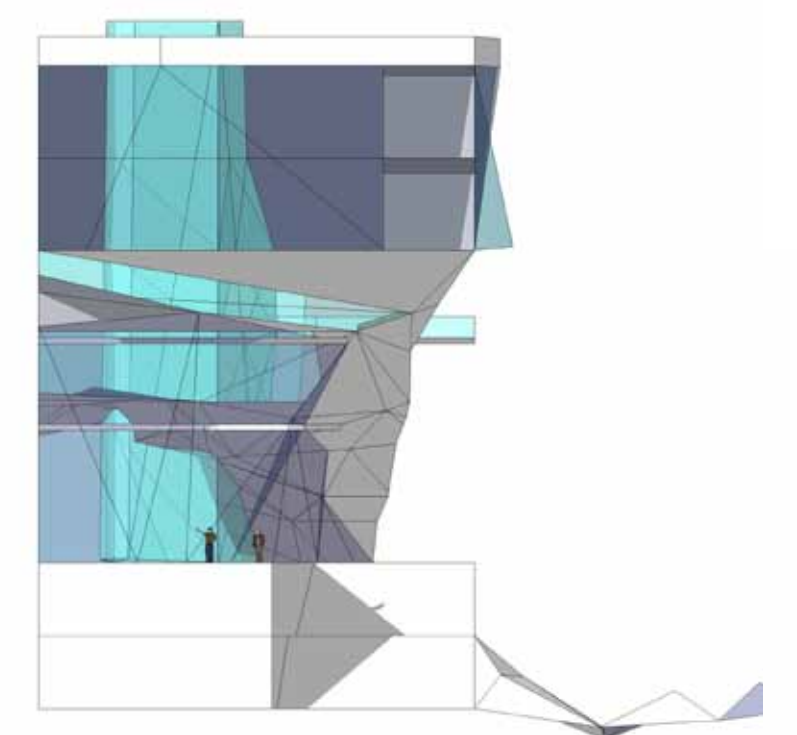
Section 1-1



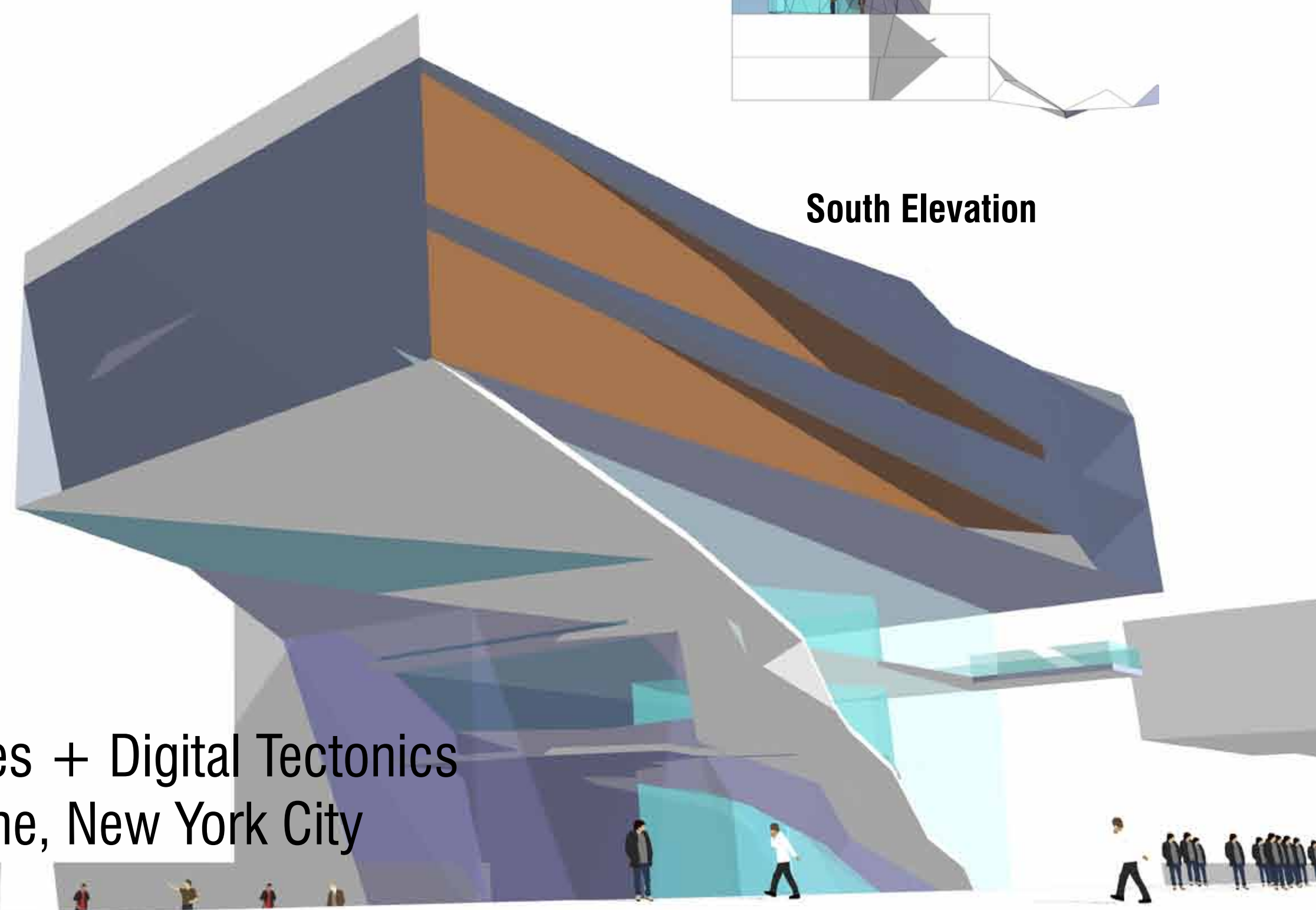
Section 2-2



Southeast Elevation



South Elevation



Kunsthall of Transparency

ARCH 842, Graduate Core Studio II

Analogies of Placemaking in the Analogue City: Digital Ecologies + Digital Tectonics

Project 1: 'Kunsthall' in Chelsea/Meatpacking District - High Line, New York City

Student: Ke Huang

Instructor: Armando Montilla